



MARINE POLLUTION

Location: San Pedro Bay, Los Angeles, USA

Impact: Marine Pollution

Issued by Skytek: at 12:00 GMT on 7 October 2021

SUMMARY

On 1-2 October 2021, as a result of growing congestion in the area, 169 blue water ships, 86 of which were longer than 250m, were in the San Pedro anchorage waiting for a free berth in either Los Angeles or Long Beach ports.

San Pedro Bay has a rich oil field, the Beta field, where Amplify Energy operates three platforms through its subsidiary, Beta Operating Co. Platform Elly processes oil from Platforms Ellen and Eureka, sending it to shore via a 17 mile long pipeline, encased in concrete and running along the ocean floor, 98 feet under water.

On 2 October at 09:10 local time, the US Coast Guard received an initial report of an oil sheen three miles off the coast of Newport Beach.

Approximately 144,000 gallons of crude oil were spilled on 2 October from a 13-inch split found in a 4,000-foot section of the pipeline running from Platform Elly. The pipeline had been pulled about 105 feet to the side, said the Amplify Energy CEO, Martyn Willsher, at a news conference on Tuesday 6 October, after an underwater inspection by ROV (Remote Operated Vehicle).

While the source has been identified as a rupture in the pipeline approximately 4 miles from Platform Elly, the cause of the rupture is still under investigation. The US Coast Guard Los Angeles-Long Beach Sector is considering the possibility that one of the ships in the area may have dragged its anchor and hooked the pipeline.

Skytek's REACT system is able to map each of the Amplify Energy platforms and all of the blue water ships anchored in the area on 1- 2 October, enabling Skytek to analyse the movement of the vessels in the vicinity of the oil pipeline.

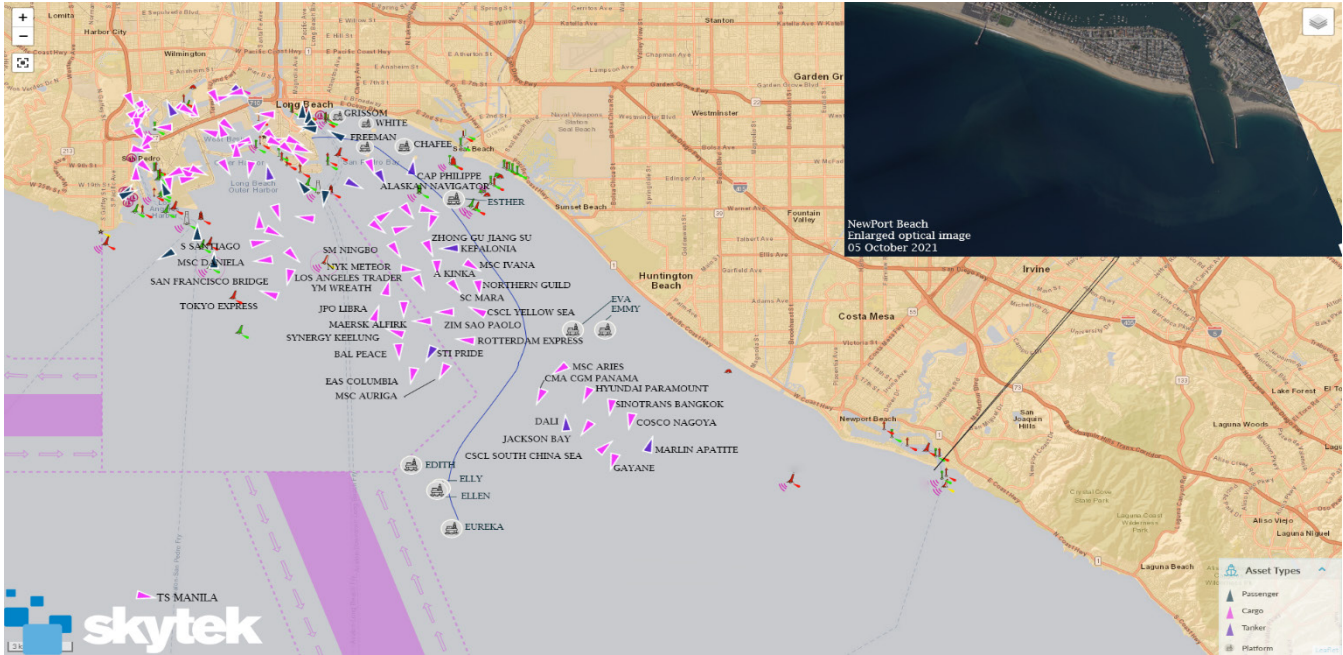


Figure 1 - 1 October 2021. Skytek map of oil platforms and anchored blue water ships. Insert - 5 October 2021. Optical image of pollution.



Figure 2 - 5 October, 23:16GMT Satellite EO Image of Newport Beach.

The weather in San Pedro Bay has been mild in the past week, with light winds and smooth seas. This has prevented further dispersion of the oil slick, which satellite imagery shows to be drifting south-easterly.

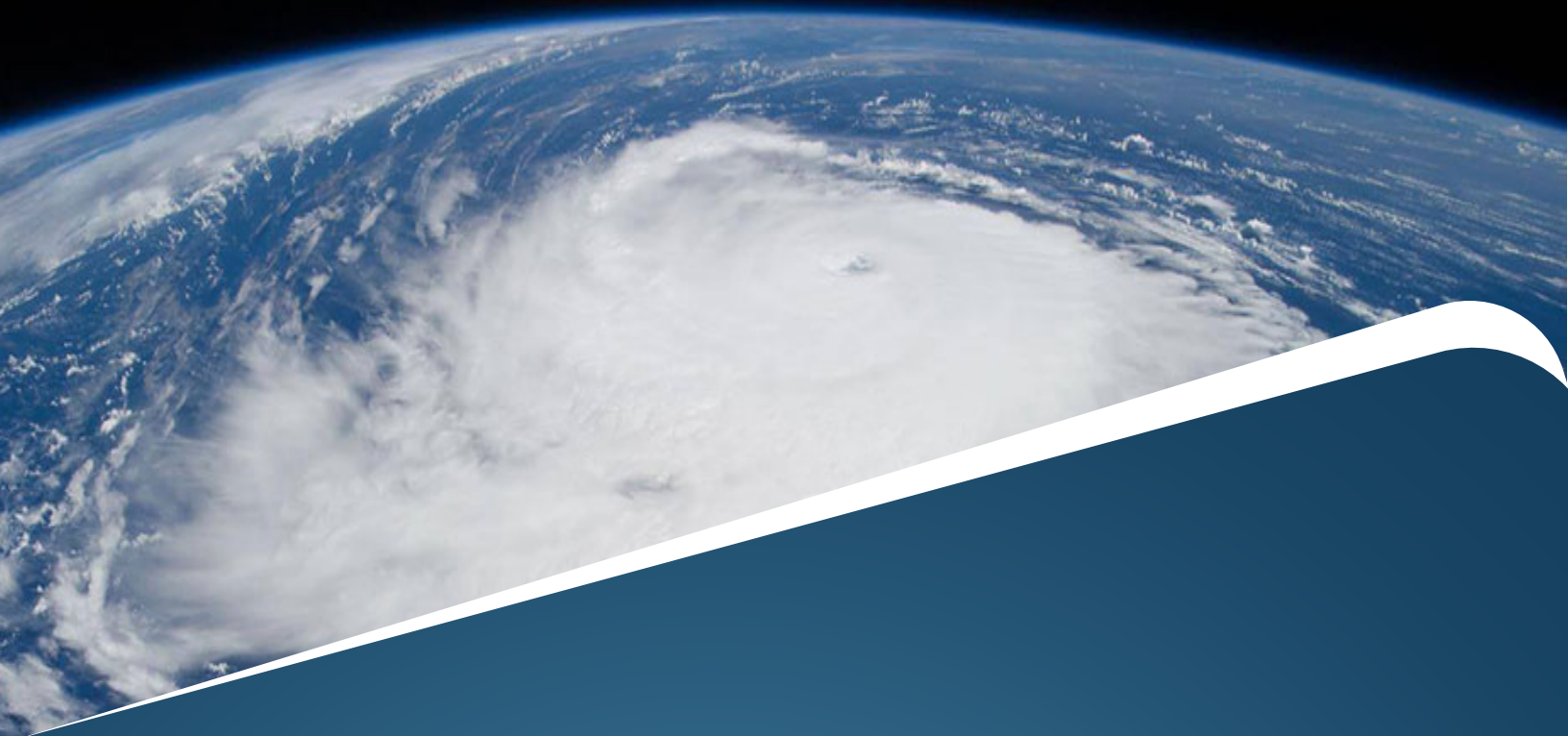
The Environmental Response Management Application (ERMA) provides updated information on the location of the slick, with the latest update available as of 6 Oct 13:42 GMT.



Figure 3 - 6 October, 13:42GMT ERMA map.

There is concern that the slick will have a long-term impact on the marine eco-system on the coasts between Huntington Beach and Oceanside and further afield.

Skytek will continue to monitor this evolving marine pollution situation.



Combining geolocation, satellite imagery and big data, underwriters and brokers can work smarter and faster by shining a spotlight on any region of the world.

With real-time information at your fingertips, REACT humanises data by creating accurate insights and actionable data that support you, your team, and your business to make more profitable decisions.

Skytek's REACT transforms Insurance by applying space technology to today's real-world challenges. As an award-winning partner of the European Space Agency (ESA) and NASA, Skytek's innovation is at the heart of our people and values.

react

GET A DEMO