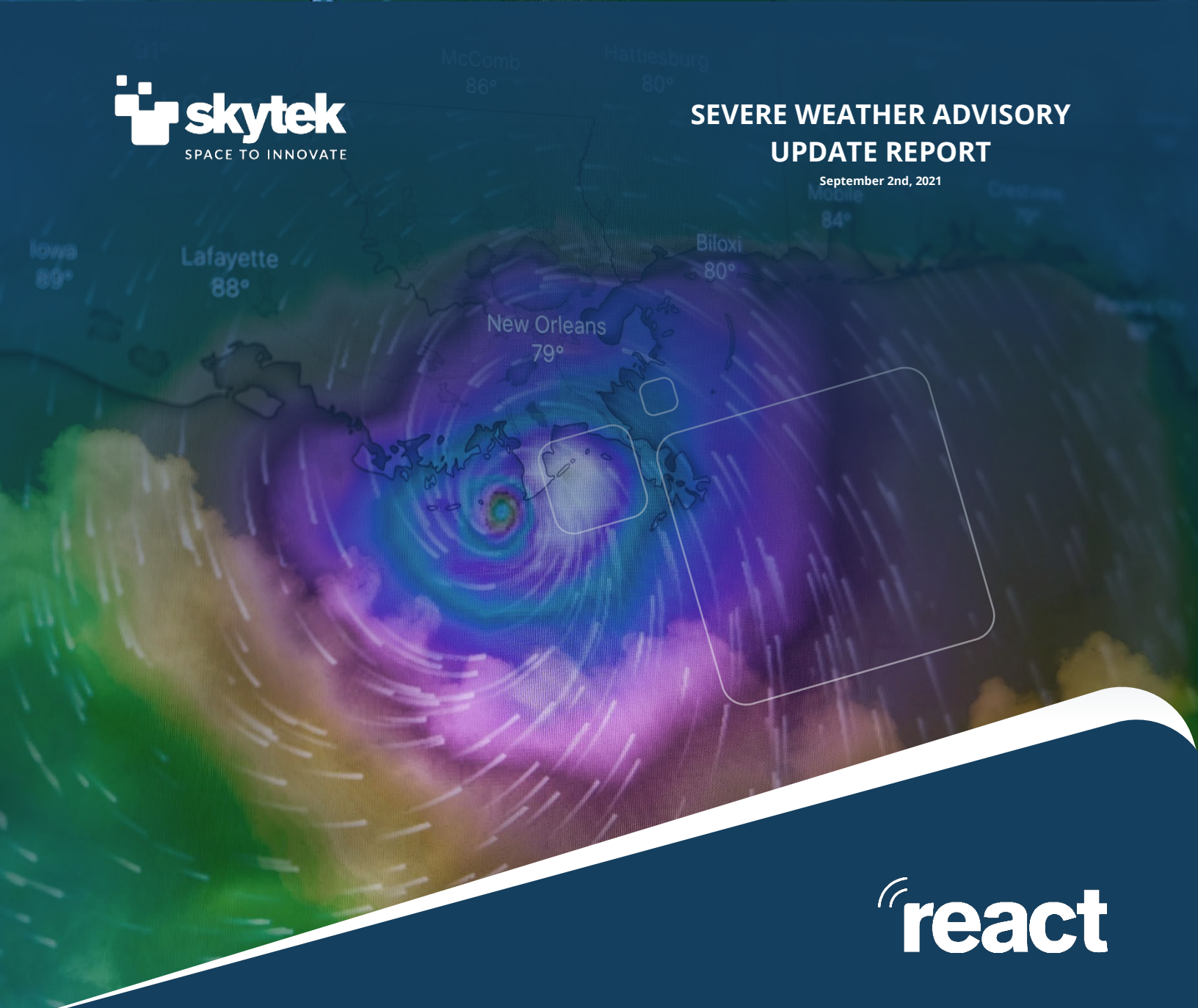


September 2nd, 2021



 **react**

# Hurricane Ida

Location: The Gulf of Mexico

Impact: Property, offshore, energy and marine exposure

Issued by Skytek: at 12:00 GMT on September 2nd, 2021



## TABLE OF CONTENTS

---

**Summary**

---

**Power Disruption**

---

**Ports and Offshore Oil & Gas Pipelines Operations Disruption**

---

**Onshore Storage, Production and Refineries Damage**

---

**Property Damage**

---

**Maine Hull Damage**



## SUMMARY

The ninth named storm, the fourth hurricane, and second major hurricane of the 2021 hurricane season, Ida, has explosively intensified after entering the Gulf of Mexico on August 27th.

Ida came ashore 16 years to the day after Hurricane Katrina and made landfall Sunday south of New Orleans.

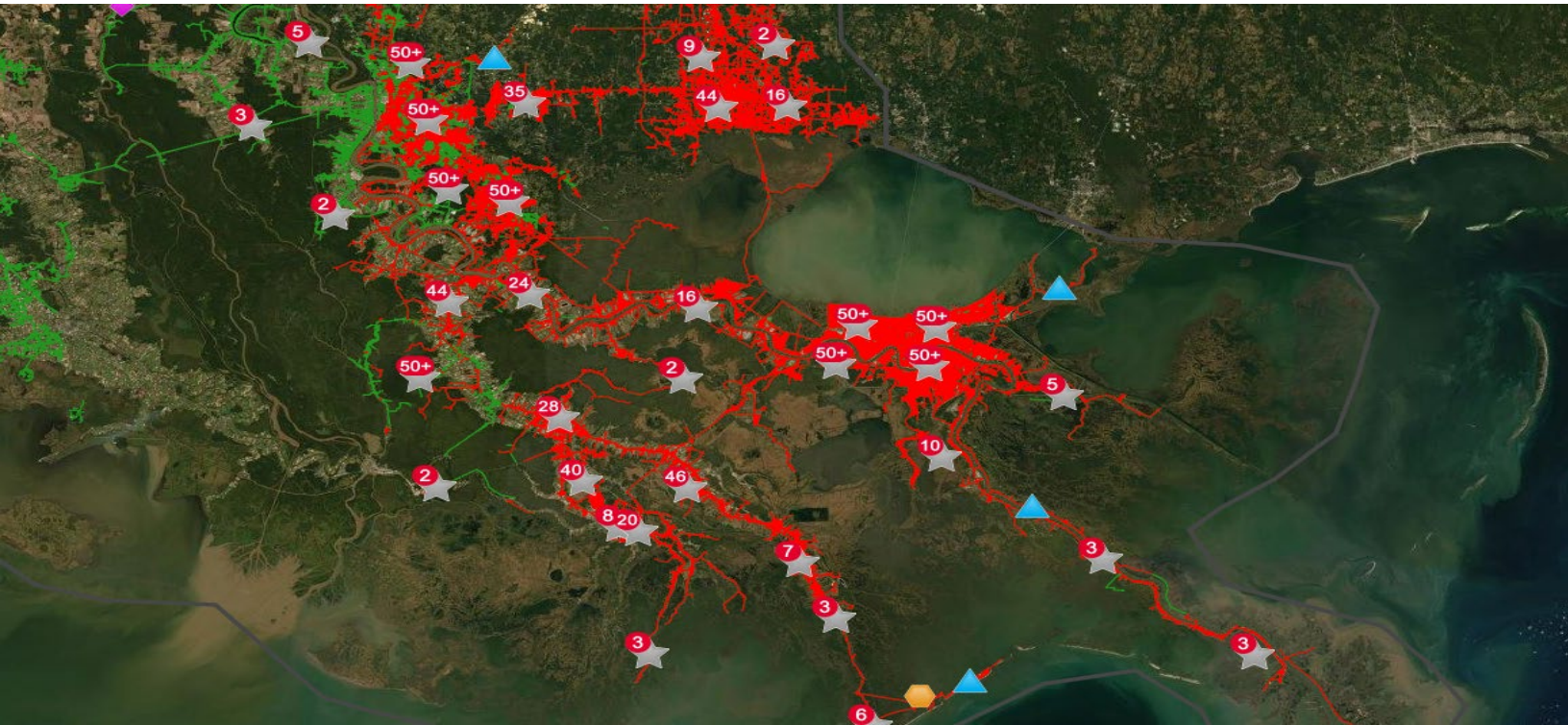
Hurricane Ida doubled in less than 24 hrs from 70 mph winds to 150 mph winds and landed near Port Fourchon as a Category 4 hurricane.

The entire city of New Orleans lost power after all eight transmission lines were knocked out — even one that withstood Katrina.

The following subsections provide an overview of the damage brought by the hurricane.



## POWER DISRUPTION



The power outage in New Orleans heightened the city's vulnerability to flooding and left hundreds of thousands of people without air conditioning and refrigeration in sweltering summer heat.

The entire city of New Orleans late Sunday August 29th was without power, according to city officials. The city's power supplier — Entergy — confirmed that the only power in the city was coming from generators, the city's Office of Homeland Security & Emergency Preparedness said on Twitter. The message included a screen shot that cited "catastrophic transmission damage" for the power failure.

The city relies on Entergy for backup power for the pumps that remove storm water from city streets. Rain from Ida is expected to test that pump system.

**More than 1 million customers were without power in Louisiana, and over 40,000 were in the dark in Mississippi, according to PowerOutage.US, which tracks outages nationwide.**

## PORTS AND OFFSHORE OIL & GAS PIPELINES OPERATIONS DISRUPTION

Hurricane Ida disrupted ports operations in the area. The U.S. Coast Guard reports that the ports of Lake Charles and Cameron in Louisiana, and Biloxi and Pascagoula in Mississippi, reopened Tuesday, August 31st to vessel traffic. The Louisiana Offshore Oil Port (LOOP), reported in an initial assessment, that there was no significant damage; however, it remains closed for the time being.

The Louisiana ports of Baton Rouge, New Orleans, Plaquemines, South Louisiana, St. Bernard, Venice, Houma, Morgan City, Port Fourchon, and the South West Pass Lightering Area remain shut to vessel traffic.

Thirty-two tankers and bulk carriers are waiting at Southwest Pass for the USCG reopening of the ports in Baton Rouge and New Orleans.

The BSEE (Bureau of Safety and Environmental Enforcement) advised that most of the U.S. Gulf of Mexico offshore oil and gas output were halted due to the storm, with 94% of oil and natural gas production still suspended on Tuesday, August 31st.

Offshore oil and gas pipelines that feed processing plants remain primarily shut. However, the Colonial Pipeline, the largest fuel line to the East Coast, restarted operation on Monday after being shut down before the storm. Exxon Mobil's Baton Rouge complex is expected to resume operation shortly.

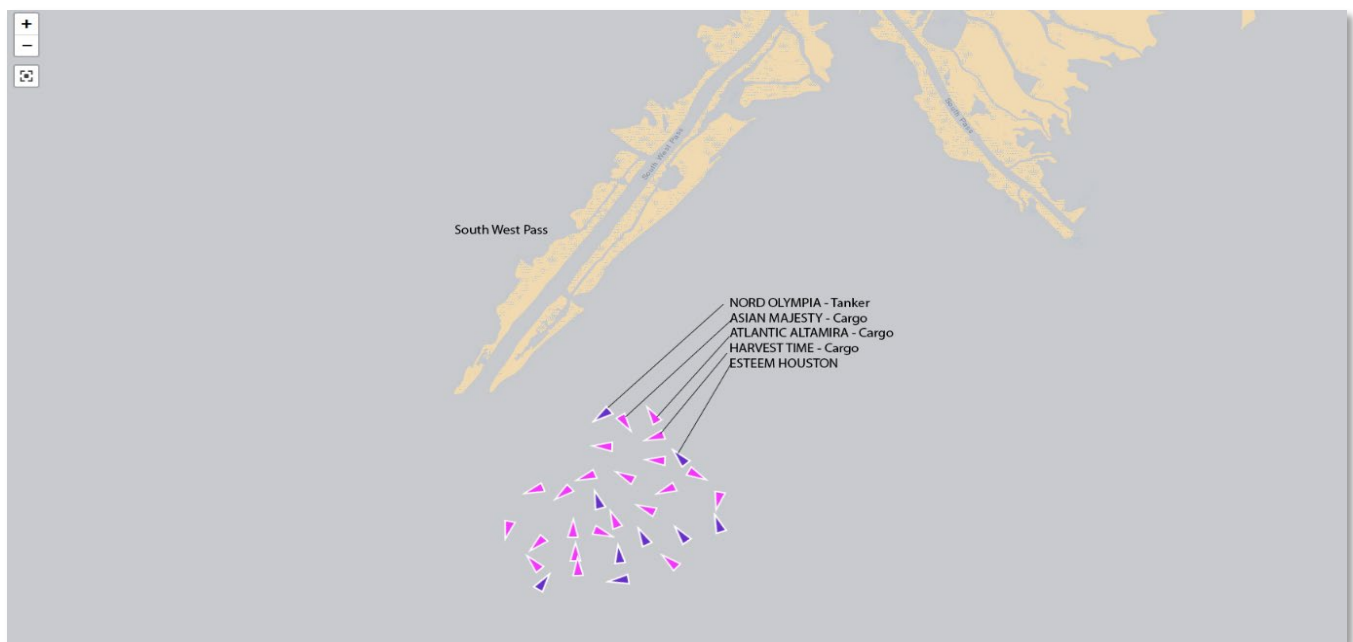


Figure 1: Vessels waiting at Southwest Pass for the USCG reopening of Baton Rouge and New Orleans ports.



## ONSHORE STORAGE, PRODUCTION AND REFINERIES DAMAGES

Hurricane Ida made landfall with 150mph winds near Port Fourchon producing damages to almost all buildings in the storage area.

Although storage tanks in Port Fourchon do not appear to be directly damaged, the effects of the hurricane will result in weeks of downtime to restore the functionality of the berths and associated logistics around the port. The damage that can be seen in the drone images acquired on August 30th and 31st:

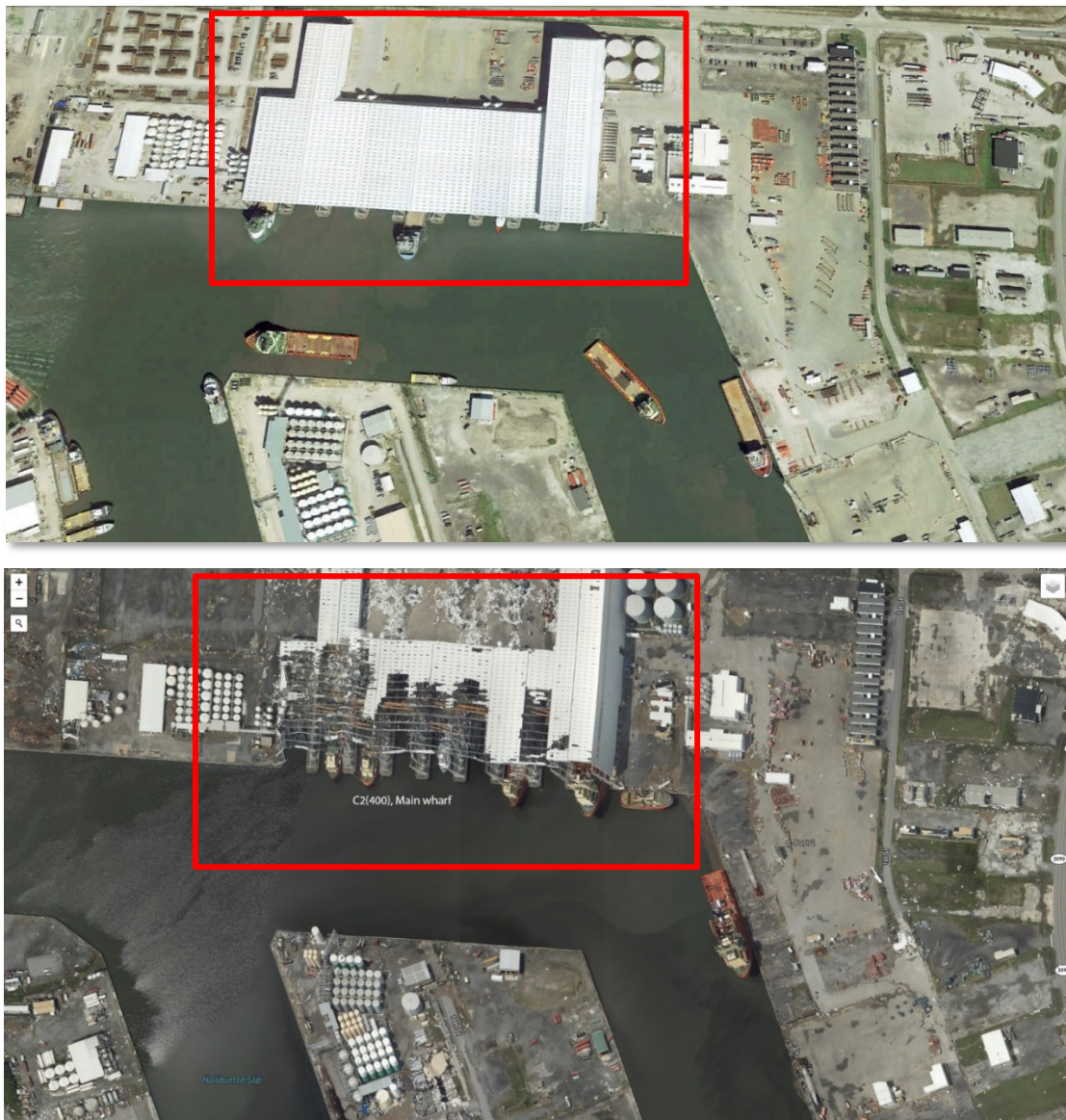


Figure 2: Pre and Post-hurricane satellite and drone images of storage tanks in Port Fourchon





Figure 3: Pre and Post-hurricane satellite and drone images of storage areas in Port Fourchon



Figure 4: An AHTS (anchor handling tug supply) vessel swept ashore in the Port Fourchon area on a floating dock.



Ida moved slowly inland, bringing heavy rains, which resulted in flooding. Through UAV/drone imagery, Skytek can report that the isolation dams around the storage tanks in Phillips 66 Refinery Alliance - Belle Chasse are flooded and not operational following a levee collapse. It may require several days for the water processing plant in the refinery to drain the floods and allow the refinery to resume normal operations. The extent of the flooding can be seen in the images below.

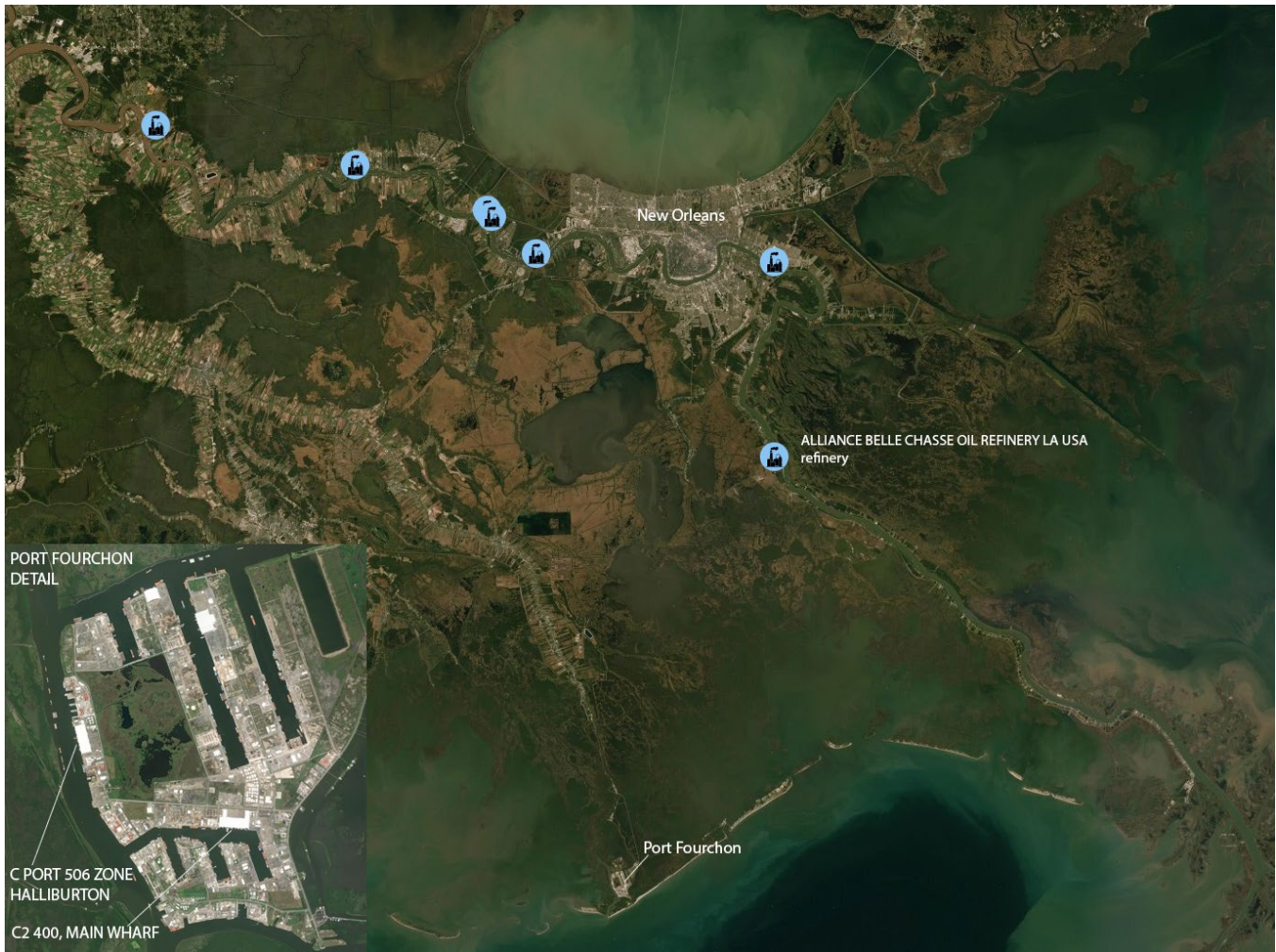


Figure 5: The location of Alliance Belle Chasse Oil Refinery



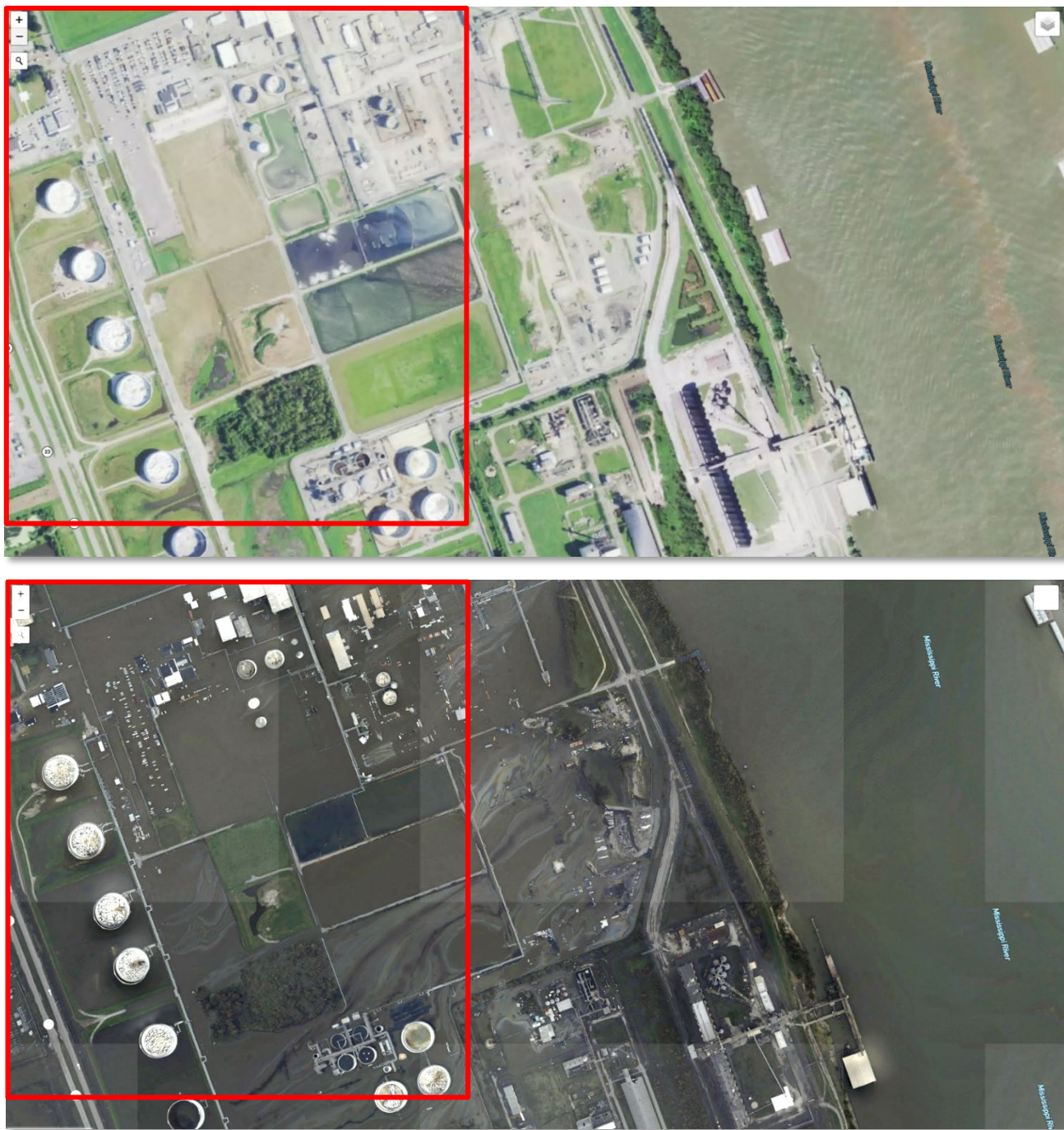
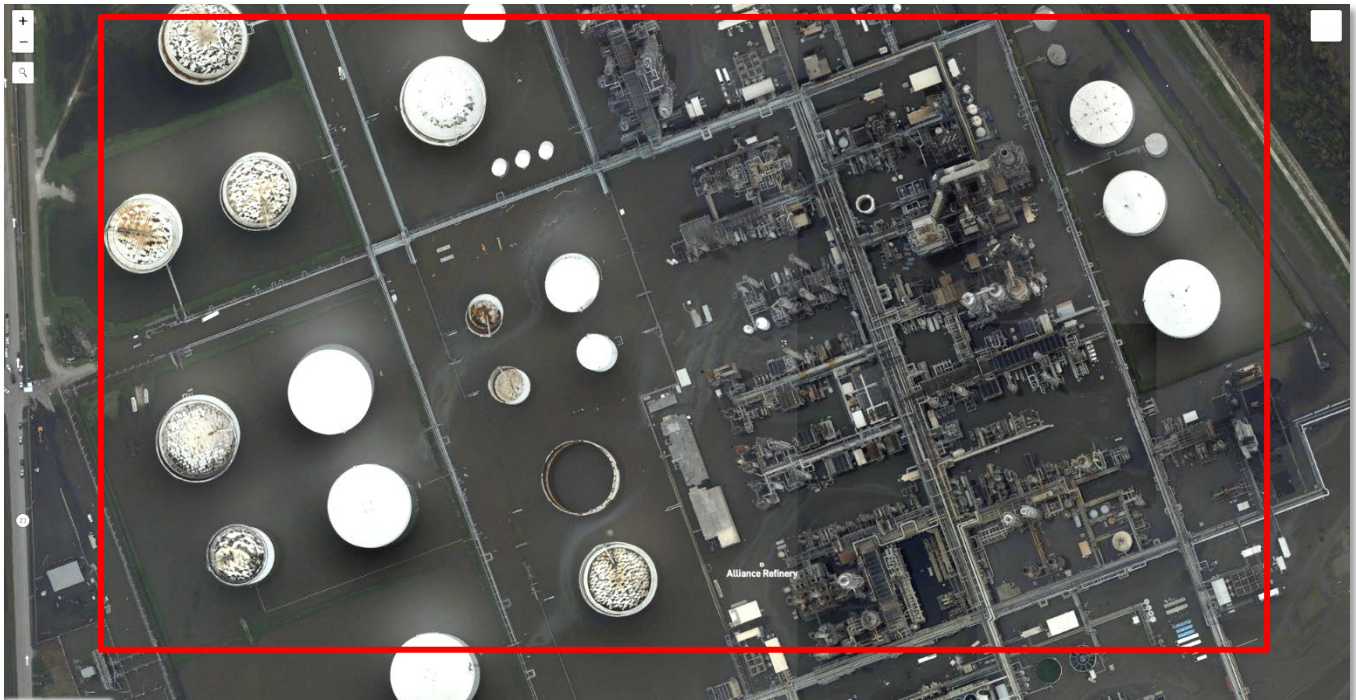


Figure: Pre and Post-hurricane satellite and drone images of Phillips 66 Refinery Alliance - Belle Chasse







## PROPERTY DAMAGE

Ida brought 150 mph force winds, a storm surge of 12-16 feet, and excessive rain, which destroyed many properties in the cities south of New Orleans.

**Houma–Terrebonne Airport** was in the trajectory of the hurricane, and the extent of the damage it suffered can be seen in the images below:



Figure 7 - Pre and Post-hurricane satellite and drone images of Houma –Terrebonne airport



**Laffite area:** residential buildings, three schools, and local administration buildings are captured in the images below. The facilities are completely flooded from the storm surge and excessive rains. and local administration buildings are captured in the images below. The facilities are completely flooded from the storm surge and excessive rains.



Figure 8 - Pre and Post-hurricane satellite and drone images of Laffite area



**Crown Point:** residential buildings and local stores have sustained wind damages and are surrounded by water from the excessive rains, as depicted below:



Figure 9: Pre and Post-hurricane satellite and drone images of Crown Point area.



**Golden Meadow:** Hurricane Ida swept over residential buildings with destructive force in this area of Louisiana, as can be seen in the images below.



Figure 10: Pre and Post-hurricane satellite and drone images of Crown Point area.



## MARINE HULL DAMAGE

Of 135 blue water ships captured on August 26th from Port Fourchon to Baton Rouge, 56 sailed away before August 30th. The remaining 77 blue water ships were primarily Bulk Carriers.

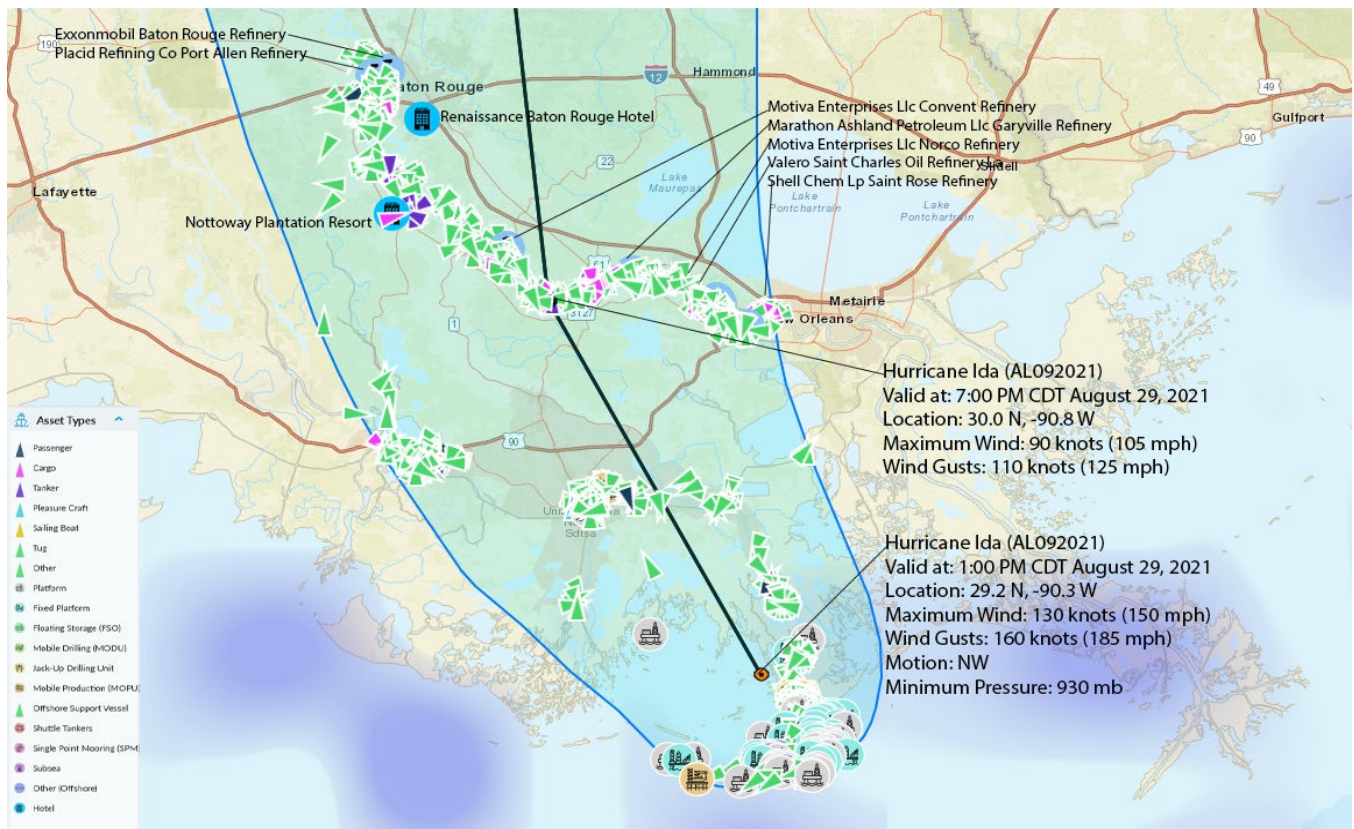


Figure 11: REACT view of the exposure at Hurricane Ida landfall, August 29th.



The REACT system during the hurricane, registered 60 vessels anchored on the Mississippi; few appear to have run aground. These include the Nord Pollux - IMO: 9728174, Atlantic Maya - IMO: 9303003, Ubc Tampico - IMO: 9285354, LT Ocean Star - IMO: 9328560, Derby - IMO: 9464780; as seen in the post-event imagery below.

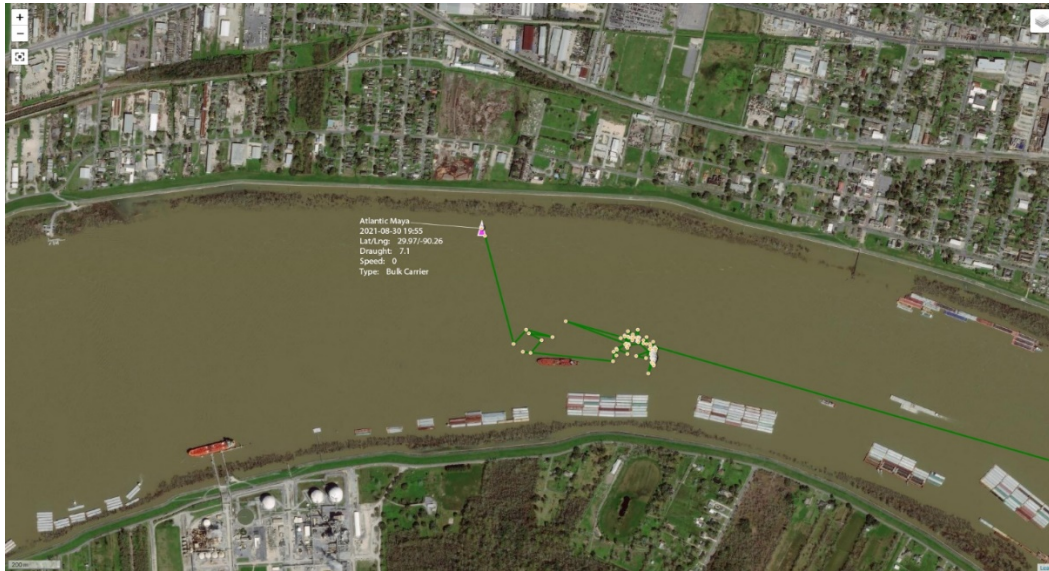


Figure 12 - Atlantic Maya runs aground on August 30th.

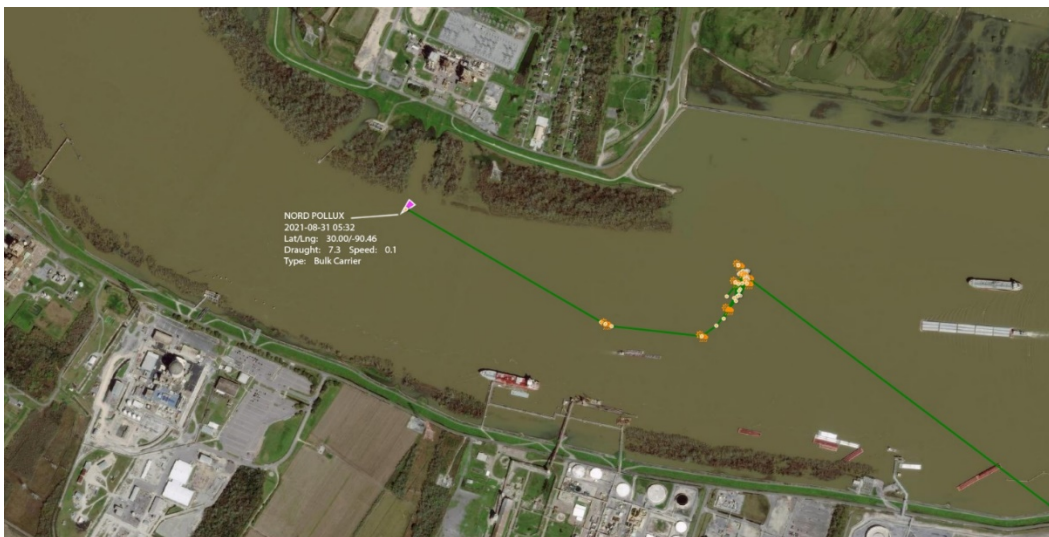
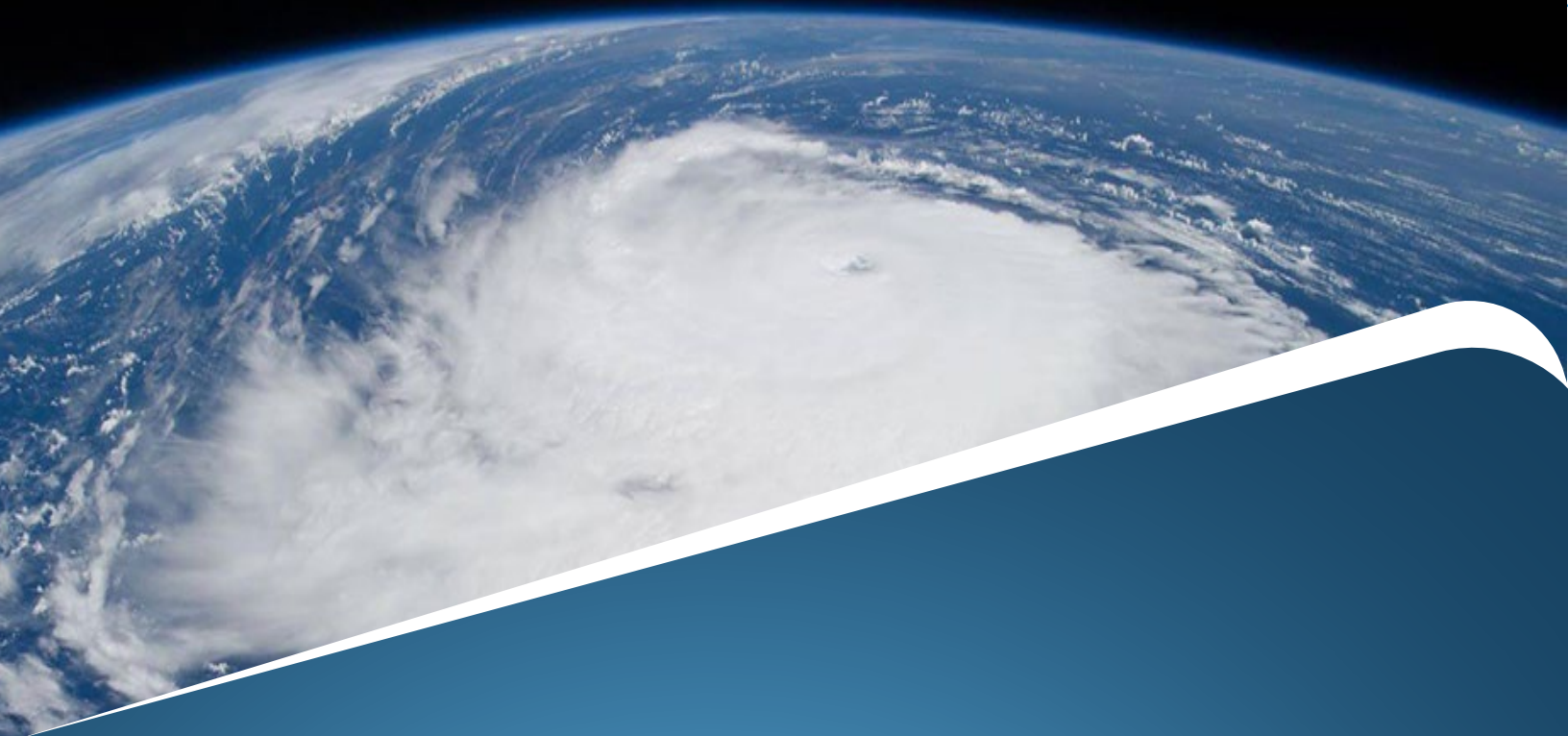


Figure 13 - Nord Pollux runs aground on August 30th.



Figure 14 - Nord Pollux runs aground on August 30th.





Combining geolocation, satellite imagery, and big data, underwriters and brokers can work smarter and faster by shining a spotlight on any region of the world.

With real-time information at your fingertips, REACT humanises data by creating accurate insights and actionable data that support you, your team, and your business to make more profitable decisions.

Skytek's REACT transforms Insurance by applying space technology to today's real-world challenges. As an award-winning partner of the European Space Agency (ESA) and NASA, Skytek's innovation is at the heart of our people and values.

---

**react**