



# Super Typhoon Chanthu

Location: West Pacific

Impact: Property, marine and offshore energy exposure

Issued by Skytek: at 12:00 GMT on September 11th, 2021

## SUMMARY

Two weather systems are currently active in the western Pacific. Typhoons Conson and Chanthu.

Conson slammed the eastern Philippines on Monday with 75 MPH winds causing power outages across several provinces and is forecast to bring floods at landfall in Vietnam on Saturday, Sep 11th.

Packing winds of 165 MPH since Sep 8th, Chanthu will sweep across Taiwan while forecasting a Category 4 typhoon with sustained winds of 140 MPH at landfall on Sunday, Sep 12th, around 12 UTC. The typhoon's trajectory over Taiwan from South to North, and Category 2 Typhoon near Taipei, could increase the storm's potential damage with the extreme winds, torrential rains, and storm surge flooding.

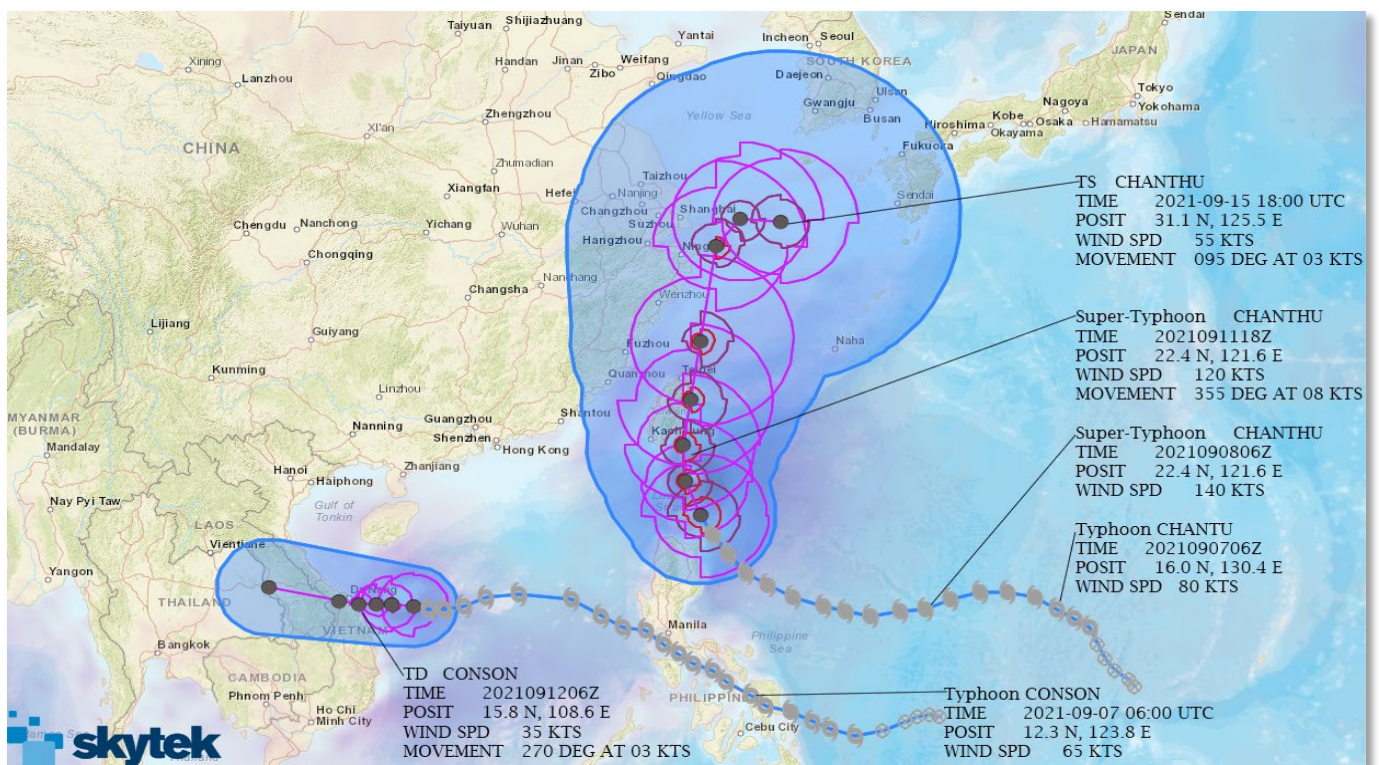


Figure 1 – Skytek's REACT view of the active weather systems in the western Pacific on Sep 11th, 2021

Taiwan's weather bureau issued a sea warning Friday for the area south of the island.

Currently Kaohsiung port is operating normally.

REACT tracks 114 blue water ships in the port of Kaoshiung on Sep 8th when Chanthu increased to Super Typhoon strength, of which 48 ships have left by Sep 11th, before the storm approached.

No operational shutdowns have been advised in Taiwan's four refineries in Taiwan and the wind farms along the northwest coast.

In China, where Chanthu will reach on the Sep 13th with the strength of a Category 1 typhoon, ports of Xiamen and Ningbo advised ships to leave the affected area.

Ports in Asia have been closed due to Covid in recent months. Typhoon Chanthu could further escalate the bottleneck in global trade, affecting the shipping companies' ability to operate smoothly.

Ship Type	Sep 8th	Sep 11th
Bulk Carrier	33	17
Cargo	9	8
Chemical / Products Tanker	8	3
Container Ship (Fully Cellular)	22	10
General Cargo Ship	24	17
Passenger	7	8
Passenger / Ro-Ro Ship (Vehicles)	10	5
Products Tanker	10	5
Tanker	1	1

Figure 2 – Ships in Kaoshiung port on Sep 8<sup>th</sup> & 11<sup>th</sup>.

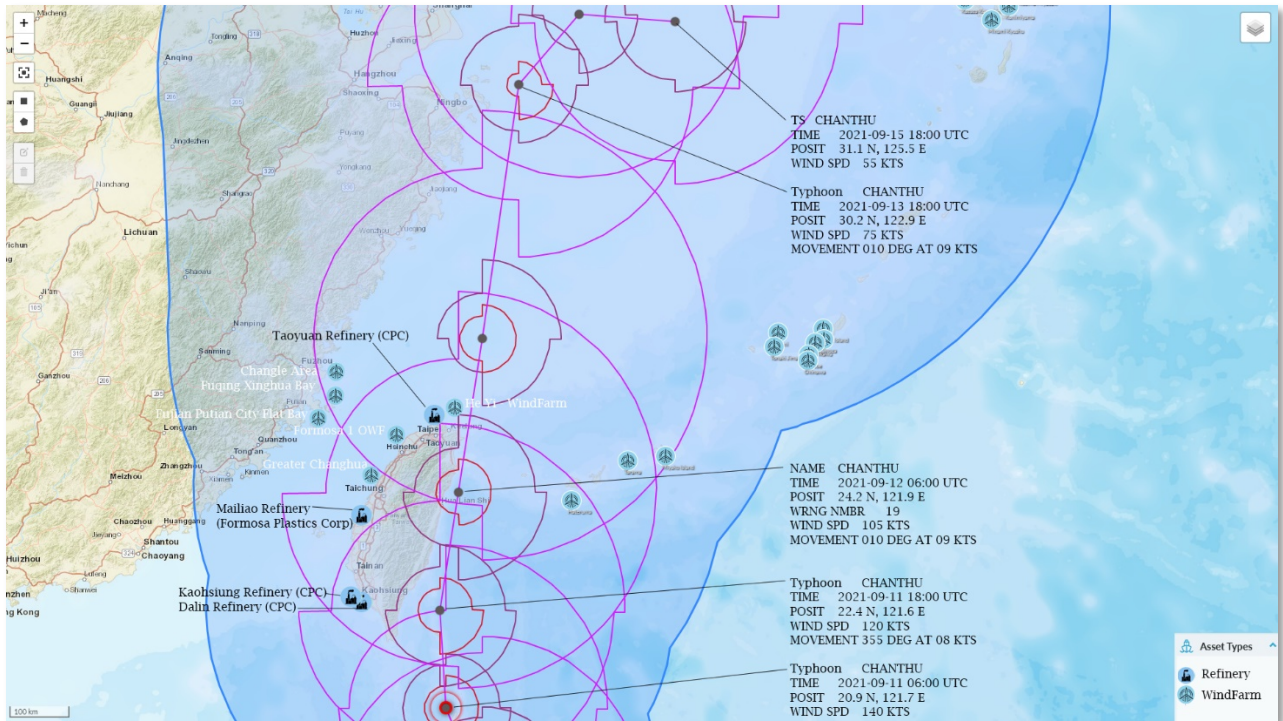


Figure 3 – Skytek’s REACT view of offshore energy exposure in the cone of Chanthu on Sep 11th, 2021

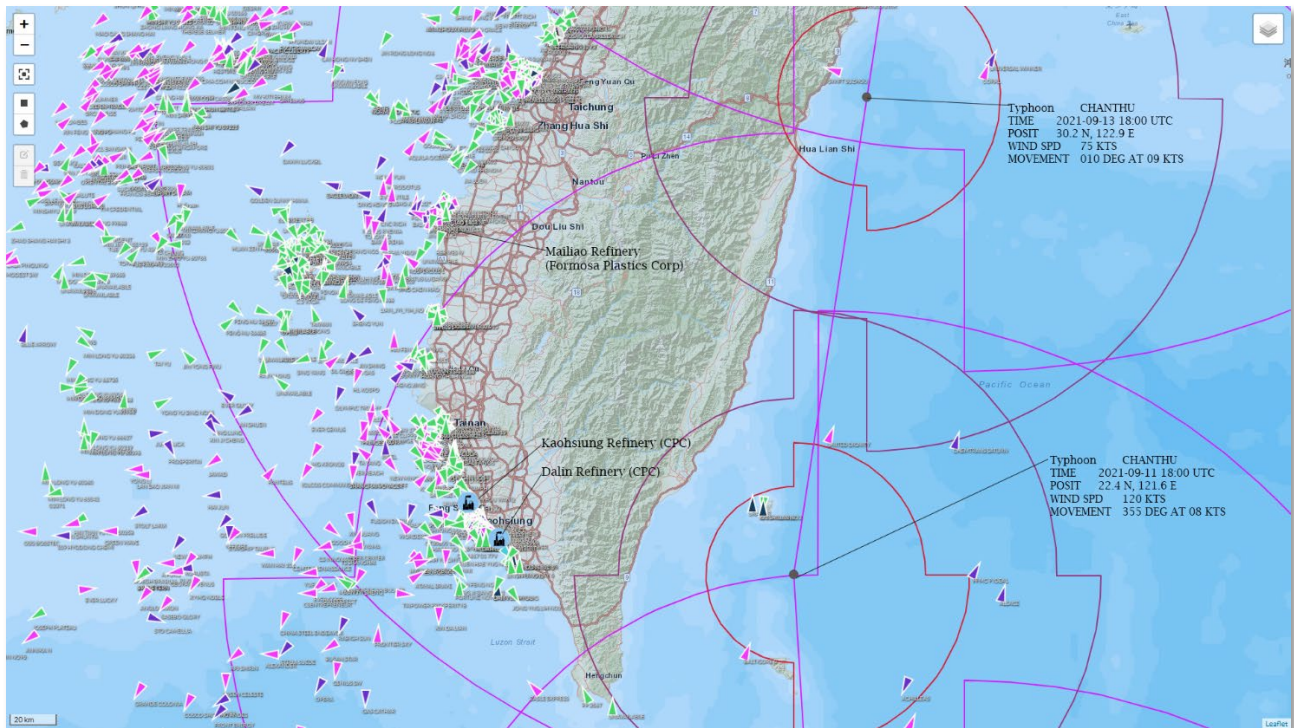


Figure 4 – Skytek’s REACT view of marine and refinery exposure in the cone of Chanthu on Sep 11th, 2021

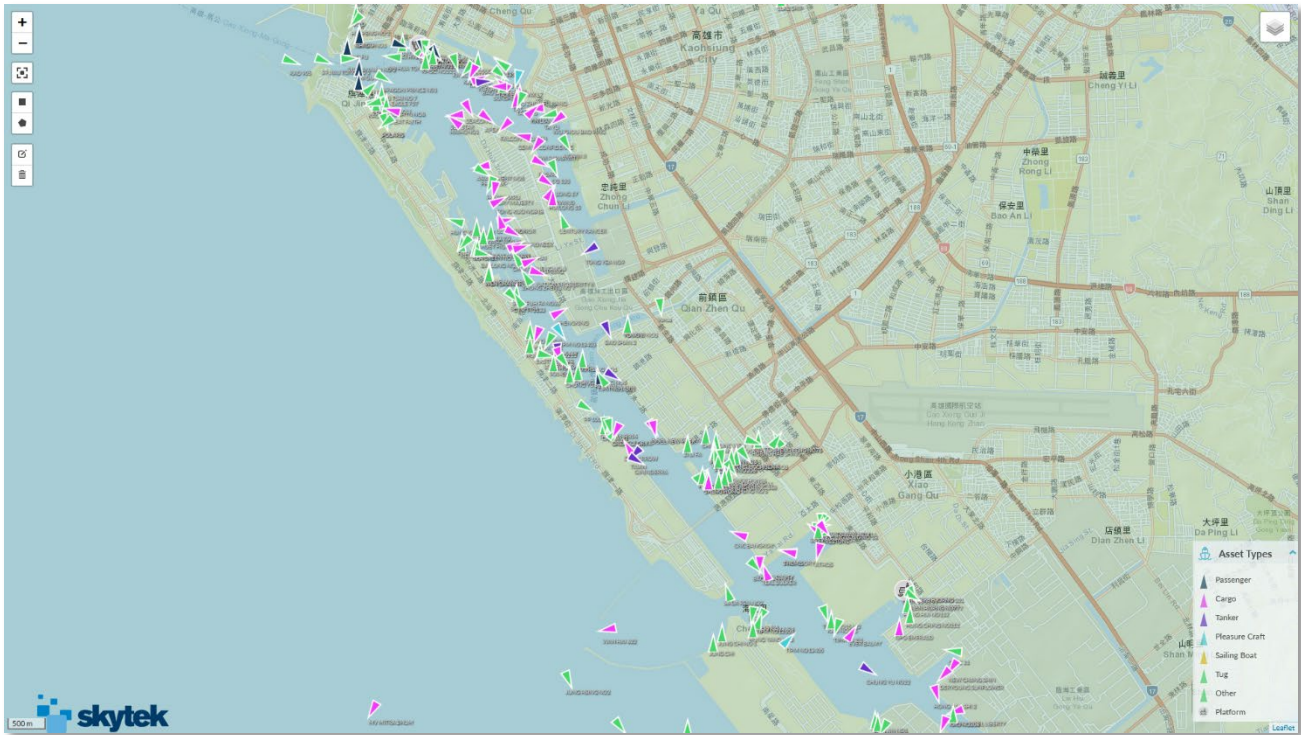



Figure 5 – Skytek's REACT view of marine hull exposure at Kaoshiung Port on Sep 11th, 2021



Combining geolocation, satellite imagery, and big data, underwriters and brokers can work smarter and faster by shining a spotlight on any region of the world.

With real-time information at your fingertips, REACT humanises data by creating accurate insights and actionable data that support you, your team, and your business to make more profitable decisions.

Skytek's REACT transforms Insurance by applying space technology to today's real-world challenges. As an award-winning partner of the European Space Agency (ESA) and NASA, Skytek's innovation is at the heart of our people and values.

react

GET A DEMO