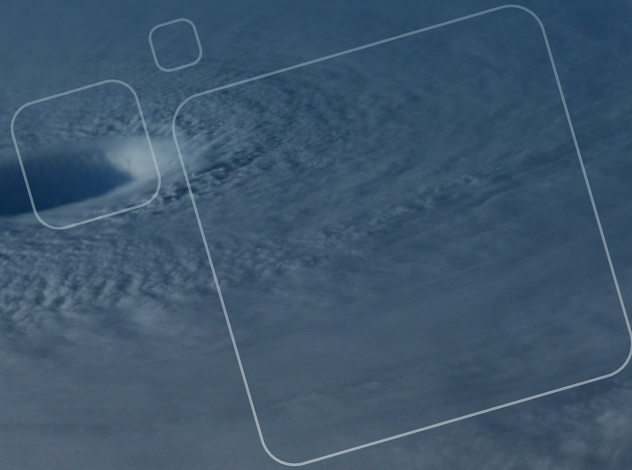


September 6th, 2021



react

Hurricane Larry

Location: North Atlantic

Impact: Marine and property exposure

Issued by Skytek: at 12:00 GMT on September 6th, 2021

SUMMARY

The 12th storm and the 3rd major hurricane of this season, Larry reached a category three hurricane with sustained winds of 125 mph and is expected to pass close to Bermuda as a large and powerful hurricane, bringing a risk of strong winds, heavy rain, and coastal flooding.

Hurricane Larry is not expected to be a direct threat to the United States, but the NHC forecast "life-threatening surf and rip current conditions are possible" along the U.S. East Coast for the next week.

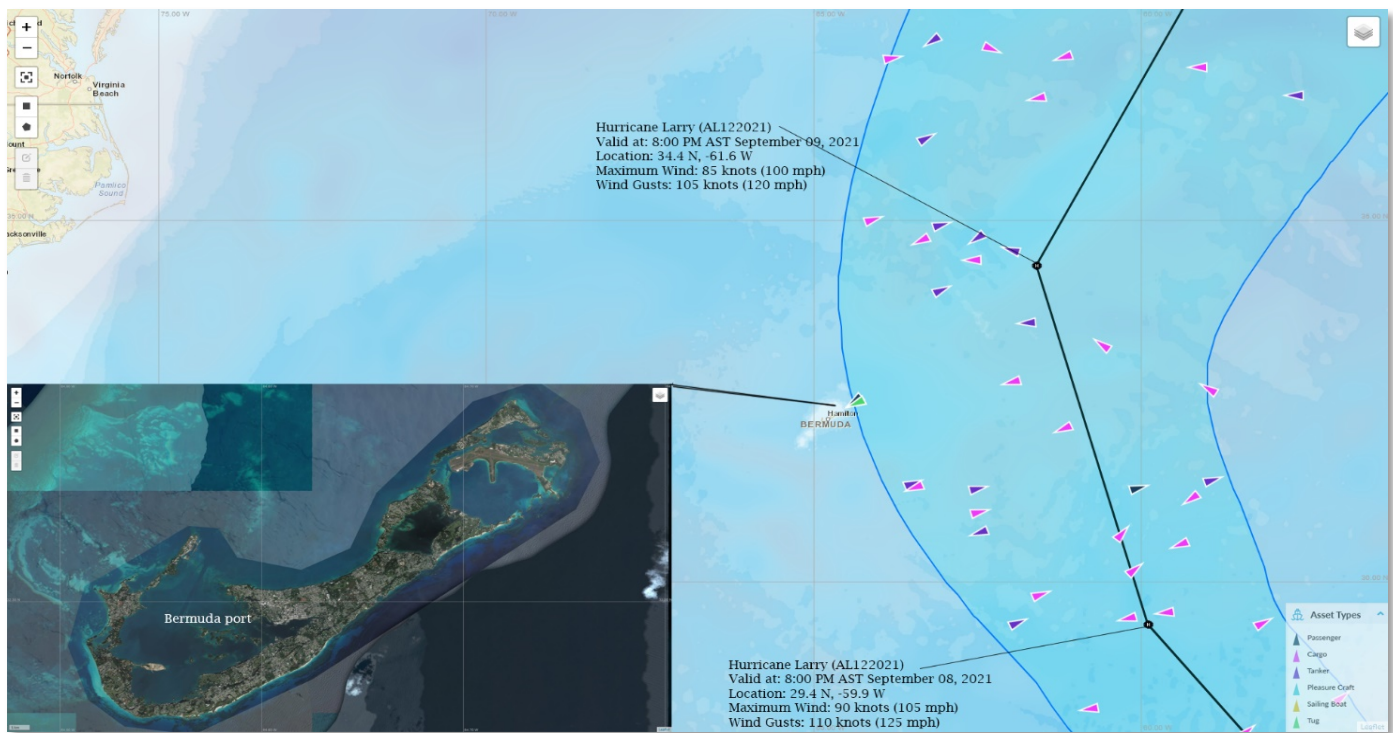
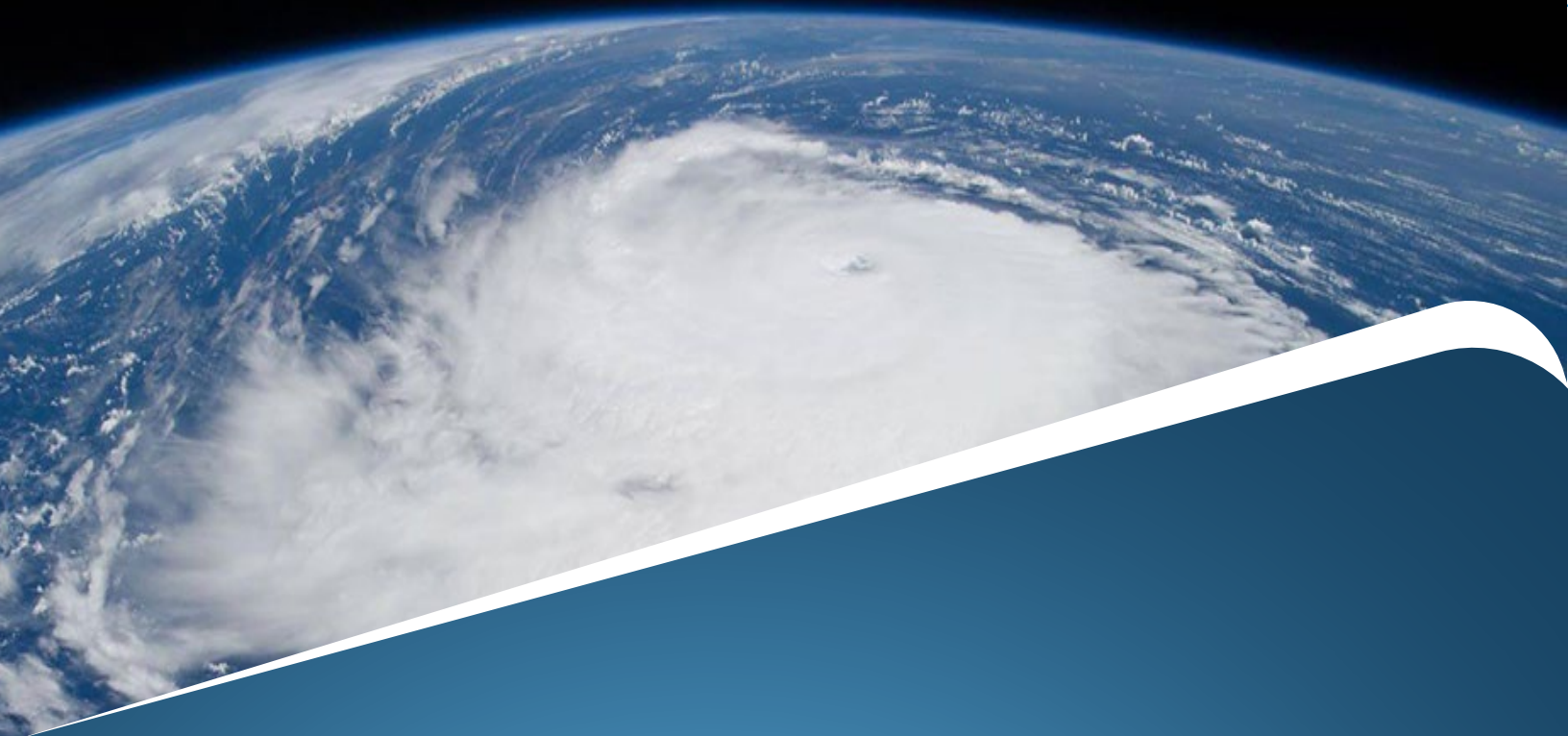


Figure 1 – Skytek's REACT shows the path of hurricane Larry on Sep 6th, 2021



Combining geolocation, satellite imagery, and big data, underwriters and brokers can work smarter and faster by shining a spotlight on any region of the world.

With real-time information at your fingertips, REACT humanises data by creating accurate insights and actionable data that support you, your team, and your business to make more profitable decisions.

Skytek's REACT transforms Insurance by applying space technology to today's real-world challenges. As an award-winning partner of the European Space Agency (ESA) and NASA, Skytek's innovation is at the heart of our people and values.



react

GET A DEMO