

29 August 2021



react

Hurricane Ida

Location: The Gulf of Mexico

Impact: Property, offshore, energy and marine exposure

Issued by Skytek: at 12:00 GMT on 29 Aug 2021

Summary:

The ninth named storm, the fourth hurricane, and second major hurricane of the 2021 hurricane season, Ida, has explosively intensified after entering the Gulf of Mexico on August 27th.

Currently a Category 3 hurricane, Ida is forecast by NHC to increase and make landfall as a destructive Category 4 hurricane with sustained winds of 145mph. Ida's trajectory indicates landfall near Golden Meadow, Louisiana, in the afternoon of August 29th and Baton Rouge in the early hours of August 30th. NHC issued life-threatening storm surge inundation of 9 feet or greater from Morgan City on the coast of Louisiana to New Orleans.

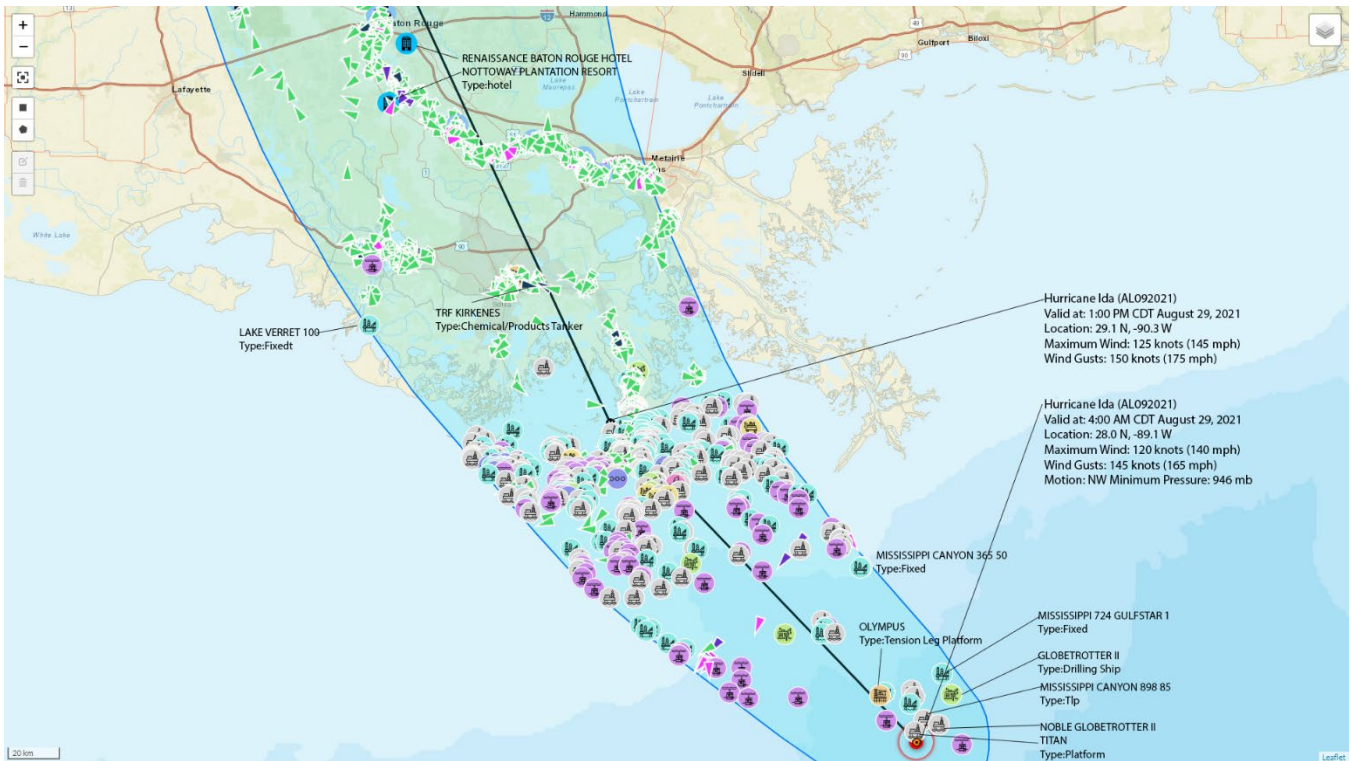


Figure 1 - Exposure aggregation in the cone of Ida, 29 Aug 2021

Bureau of Safety and Environmental Enforcement (BSEE) reports that 90% of oil production and 85% of gas production in the Gulf has been suspended, with personnel evacuated from 50% of the manned platforms.

Skytek's REACT captures 850 offshore energy assets in the cone of Hurricane Ida. 276 are platforms and 235 offshore supply vessels, with the remainder being anchor handling, drilling rig, semi-submersible drilling units etc.

REACT tracks all assets' aggregation in the storm's cone. The bulk carriers and tankers moored at jetties along the Mississippi are mapped below.

There are 8 refineries in the path of the hurricane, and these have reportedly temporarily shut down activities.

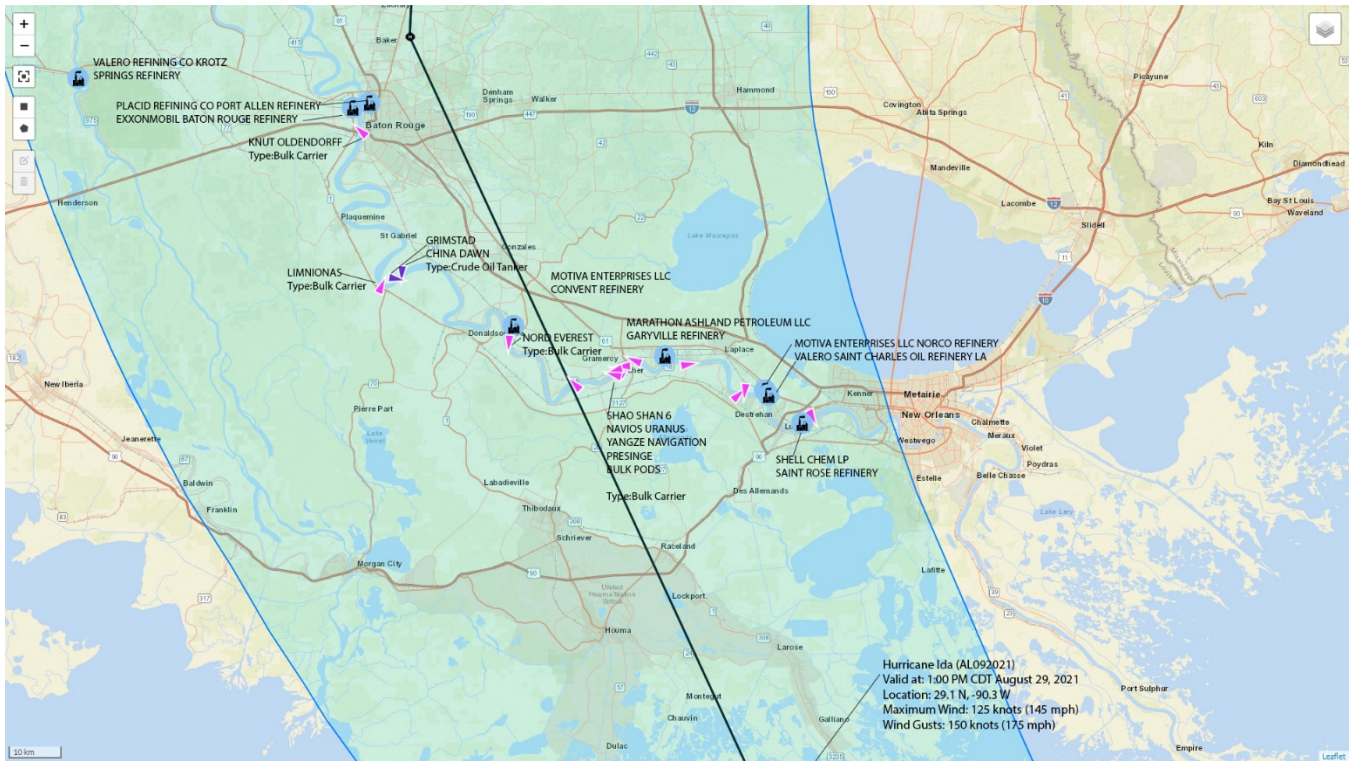
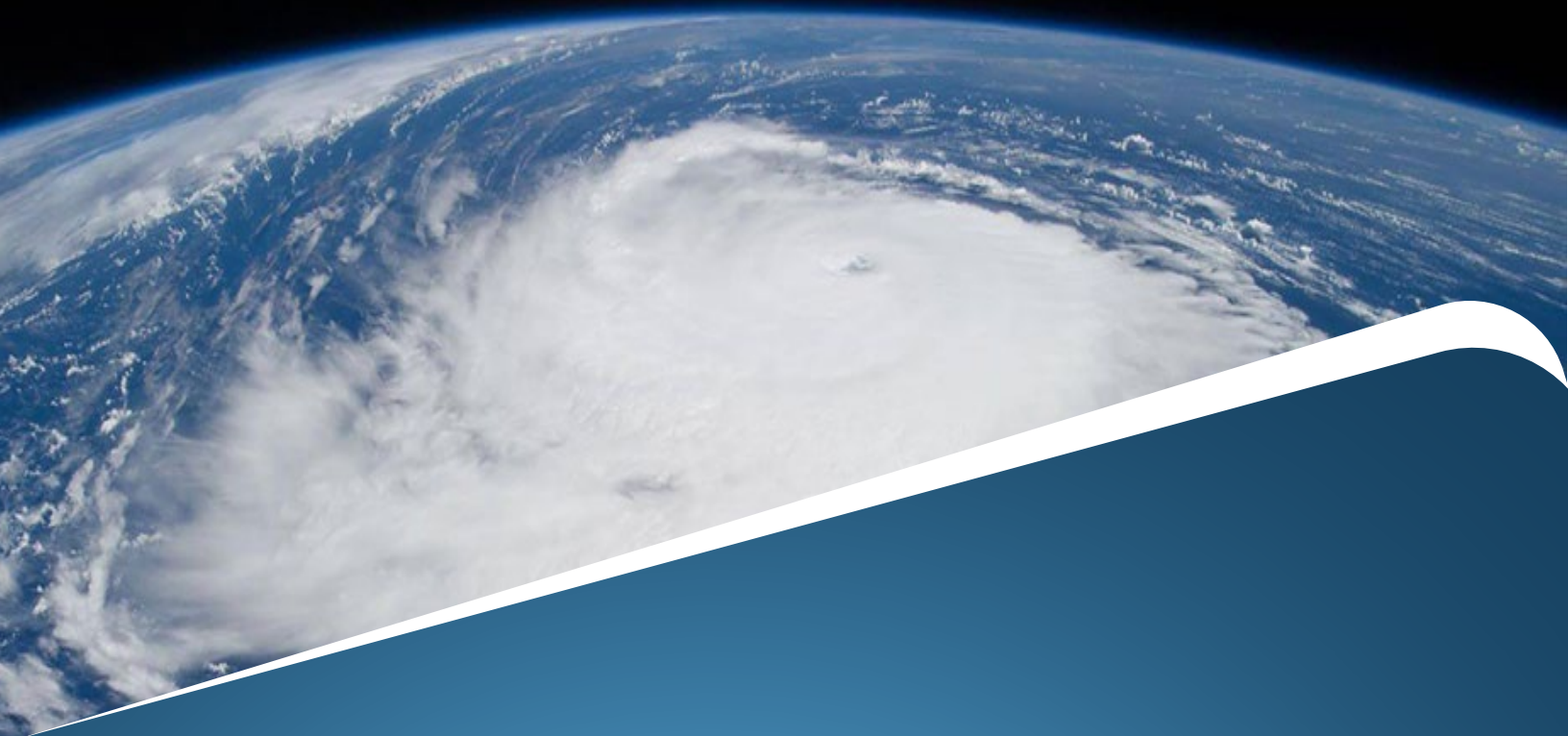


Figure 2 – Blue water ships and refineries in the path of hurricane Ida.



Combining geolocation, satellite imagery and big data, underwriters and brokers can work smarter and faster by shining a spotlight on any region of the world.

With real-time information at your fingertips, REACT humanises data by creating accurate insights and actionable data that support you, your team, and your business to make more profitable decisions.

Skytek's REACT transforms Insurance by applying space technology to today's real-world challenges. As an award-winning partner of the European Space Agency (ESA) and NASA, Skytek's innovation is at the heart of our people and values.

react